

CERTIFICATE OF LOCATION OF GOVERNMENT CORNER

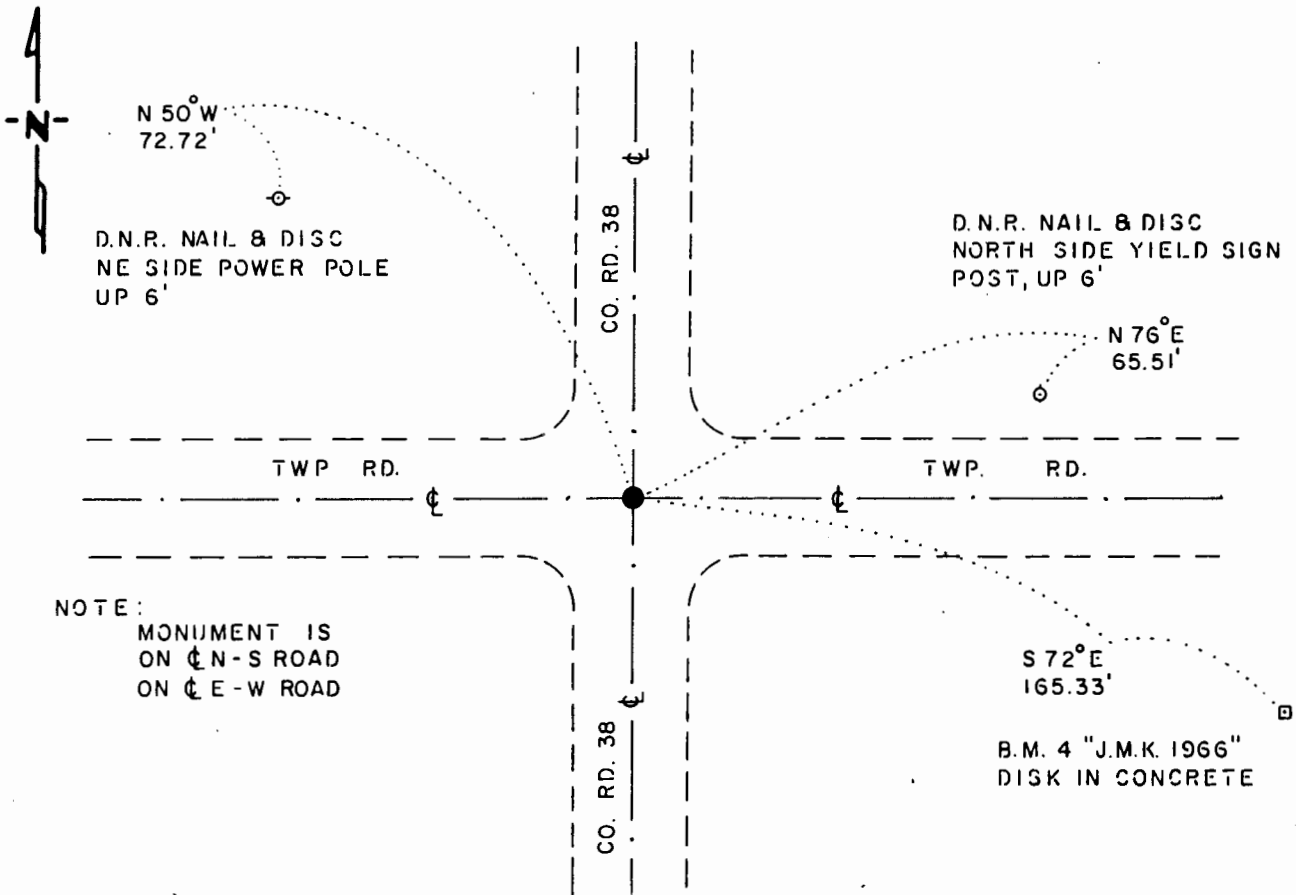
NORTHEAST Corner of Section 22, Township 108 N., Range 40 W., 5th P.M.

STATE OF MINNESOTA, County of MURRAY

At the corner location shown on the sketch:

- On 10-23-84 found a 6"x6" CONCRETE MONUMENT, DOWN 24"
DATE
- left monument as found, lowered monument, removed monument (explain)
- On 10-23-84 placed a 1 1/4"x1 1/4"x 20" PERFORATED STEEL TUBE WITH
DATE
ALUMINUM CAP STAMPED "D.N.R. SURVEY MARKER", OVER CONC. MON., FLUSH

SKETCH OF REFERENCE TIES



NOTE:
 MONUMENT IS
 ON ϕ N-S ROAD
 ON ϕ E-W ROAD

BEARINGS OBSERVED WITH COMPASS

Statement of evidence relative to this corner location is on back of page.

J.B.M. 7-18-85
 G-361

I hereby certify that this document and the data contained herein was prepared by me or under my direct supervision.

Lowell R. Pomeroy 7-22-85
SIGNATURE DATE

Registration No. 17005

- Land Surveyor, Professional Engineer
- County Surveyor, County Engineer

OFFICE OF THE COUNTY RECORDER **172136**
 County of Murray

I hereby certify that this document was filed in the Co. Recorders office at 10 .M. on the 30th day of July A.D., 1985

County Recorder Henry J. Ohme

By _____, Deputy

DOCUMENT NO. 172136

Northeast Corner Section 22, Township 108 North, Range 40 West

This corner was originally established by the U. S. General Land Office survey in 1861. The government notes show corner marked with a wood post set in mound of earth with pits and trench dug around the mound.

In October 1984, the DNR Bureau of Engineering contacted the Murray County Offices of the Recorder and Highway Engineer for corner information.

The following information was obtained from the County Highway Engineer's Office:

A page in a Surveyor's Record Book, shows Section 23 and lists the following about this corner:

- 1) stone-date not indicated
- 2) 1936 concrete stone with these ties:
 - RP (X) on south end culvert, 30.6 feet
 - RP (X) on north end culvert, 29.5 feet culvert in driveway East
- 3) concrete stone, date not indicated, with these ties:
 - RP tack in corner fence post, west on line, 34.6 feet
 - RP tack in corner fence post, northeast, 45.2 feet
- 4) May 1948 shows these ties:
 - RP south edge of culvert, southwest, 31.7 feet
 - RP tack in corner fence post, northwest, 49.0 feet
 - RP tack in telephone pole, southeast, 41.3 feet

The County Engineer's government corner tie book shows that on July 7, 1971, a concrete monument was found and a steel pin was placed above the monument.

On September 5, 1980, these ties were taken to the corner.

- nail and cap in corner fence post, northwest, 49.30 feet
- nail and cap in telephone pole, northeast, 56.40 feet

The following information was obtained from the County Recorder's Office:

A certificate of location of a government corner, dated September 5, 1980, signed by Gary Martin, RLS#12967, describes this corner as a 1/2 inch iron reinforcing bar per county records; iron is on the center line intersection of roads north-south and east-west. These distances are shown:

- 2652.84 feet to the north quarter corner of Section 22
- 2654.91 feet to the east quarter corner of Section 15
- 2658.35 feet to the north quarter corner of Section 23

In October 1984, the DNR Bureau of Engineering traversed to the area of the corner and found a 1/2 inch by 15 inch rebar over a 6 inch by 6 inch concrete monument which was down 24 inches. Monument is at the intersection of roads north-south and east-west. Measured 2652.93 feet to the north quarter corner of Section 22.

Accept the concrete monument as the location of the corner.

Traverse information is available from the DNR Bureau of Engineering.